

Vyners School

GCSE Course Information Booklet

GCSE course information to support students in the preparation for their summer exams.

English Literature

EXAMINING BODY: AQA

EXAMINATION REQUIREMENTS

Examination 100%

This subject has a single tier entry with two examination papers. All examinations are closed book which means that you will not take anything into the examination; any stimulus materials required will be provided as part of the assessment. All assessments are compulsory.



Paper 1: Shakespeare and the 19th-century novel (40%) 1 hour 45 minutes

There will be two sections.

- **Section A** – Shakespeare - here you will answer one question on the Shakespeare play that you have studied. You will be required to write in detail about an extract from the play and then to write about the play as a whole.
- **Section B** – The 19th century novel: you will answer one question on the novel that you have studied. You will be required to write in detail about an extract from the novel and then to write about the novel as a whole.

Paper 2: Modern Texts and Poetry (60%) 2 hours 15 minutes

There will be three sections.

- **Section A** – Modern texts: you will answer one essay question from a choice of two on your studied modern prose or drama text.
- **Section B** – Poetry: you will answer one comparative question on one named poem printed on the paper and one other poem from your chosen anthology cluster.
- **Section C** – Unseen Poetry: you will answer one question on one unseen poem and one question comparing this poem with a second unseen poem.

COURSE DESCRIPTION

The skills you develop in your English Language course will naturally complement the work that you do for this subject. You will develop literal and inferential comprehension; critical reading skills and evaluation of a writer's choice of vocabulary, grammatical and structural features analysing and evaluating how they impact readers. You will also learn to consider writers' social, historical and cultural contexts in your interpretation of texts. You will need to produce clear and coherent texts writing effectively for a range of purposes such as description, explanation, summary, argument, analysis and evaluation. To do this successfully you will need to write in accurate Standard English using accurate spelling, punctuation and grammar. You will also use relevant quotations and detailed textual references to support this writing.

PROGRESSION

Although a Grade 4 is a 'standard pass', a qualification at GCSE level at a minimum of Grade 5 is essential in most areas of employment and further education. To progress to A Level English Literature, **at least a grade 6** is required at GCSE in English Language and English Literature (with a strong recommendation that you attain a grade 7 in both subjects).

English Language

All students are required to study **GCSE English Language** and **GCSE English Literature**.

EXAMINING BODY: AQA

EXAMINATION REQUIREMENTS

Examination 100%



This subject has a single tier entry with two examination papers. Each examination will be 1 hour 45 minutes

Paper 1 – Explorations in Creative Reading and Writing (50%) 80 marks

This paper will have two sections. The first section is **READING**. This requires you to read a previously unseen literature fiction text and answer questions on it. The questions will progressively become more difficult.

The second section is **WRITING**. This task will comprise of an extended descriptive or narrative writing task that will be marked for both content and technical accuracy.

Paper 2 – Writers' Viewpoints and Perspectives (50%) 80 marks

This paper will have two sections. The first section is **READING** and will be based on two previously unseen linked texts that you will have to read and answer questions about that will progressively become more difficult. One of these texts will be 20th/21st century non-fiction and the other will be 19th century literary non-fiction.

The second section is **WRITING**. This task will comprise of an extended writing question that will require you to write presenting a point of view that will be marked for content and technical accuracy.

SPOKEN LANGUAGE

This is a separate element of English Language and the marks do not count towards the final grade in GCSE English Language. Instead, a grade will be recorded separately on certificates as an endorsement to the GCSE qualification. This endorsement will be graded as either Pass, Merit or Distinction.

You will be assessed by your teacher throughout the course and you will be marked on your ability to present, to respond to questions and feedback. You will be judged throughout on your use of Standard English.

COURSE DESCRIPTION

You will be given opportunities to read a range of texts in order to develop higher-order reading and critical thinking skills that encourage the development of fluency as well as critical and comparative evaluation of texts.

You will need to read challenging material from the 19th, 20th and 21st centuries.

You will need to be able to read and comprehend what you have read in single texts and in pairs of texts.

You will need to develop an ability to synthesise what you have read.

You must demonstrate that you can write effectively using Standard English and use grammar correctly and punctuate and spell accurately.

You will need to acquire and apply a wide vocabulary, grammatical terminology and linguistic conventions for reading, writing and spoken language use.

PROGRESSION

Although a Grade 4 is a 'standard pass', a qualification at GCSE level at a minimum of Grade 5 is essential in most areas of employment and further education. To progress to A Level English Literature, **at least a grade 6** is required at GCSE in English Language and English Literature (with a strong recommendation that you attain a grade 7 in both subjects).

Mathematics

GCSE Mathematics is taken by all students at one of two tiers of entry: Foundation or Higher.

EXAMINING BODY: AQA

EXAMINATION REQUIREMENTS AND COURSE DESCRIPTION

The course covers the following areas of Mathematics:

- Number
- Algebra
- Ratio, proportion and rates of change
- Geometry and Measures
- Statistics
- Probability



GCSE Mathematics has a Foundation tier (grades 1 – 5) and a Higher tier (grades 4 – 9). Students must take three question papers at the same tier. All question papers must be taken in the same series.

The information in the table below is the same for both Foundation and Higher tiers.

Paper 1: non-calculator	+	Paper 2: calculator	+	Paper 3: calculator
<p>What's assessed</p> <p>Content from any part of the specification may be assessed</p>		<p>What's assessed</p> <p>Content from any part of the specification may be assessed</p>		<p>What's assessed</p> <p>Content from any part of the specification may be assessed</p>
<p>How it's assessed</p> <ul style="list-style-type: none"> • written exam: 1 hour 30 minutes • 80 marks • non-calculator • 33⅓% of the GCSE Mathematics assessment 		<p>How it's assessed</p> <ul style="list-style-type: none"> • written exam: 1 hour 30 minutes • 80 marks • calculator allowed • 33⅓% of the GCSE Mathematics assessment 		<p>How it's assessed</p> <ul style="list-style-type: none"> • written exam: 1 hour 30 minutes • 80 marks • calculator allowed • 33⅓% of the GCSE Mathematics assessment
<p>Questions</p> <p>A mix of question styles, from short, single-mark questions to multi-step problems. The mathematical demand increases as a student progresses through the paper.</p>		<p>Questions</p> <p>A mix of question styles, from short, single-mark questions to multi-step problems. The mathematical demand increases as a student progresses through the paper.</p>		<p>Questions</p> <p>A mix of question styles, from short, single-mark questions to multi-step problems. The mathematical demand increases as a student progresses through the paper.</p>

FURTHER MATHEMATICS

Students in the top sets will also be taught Further Maths (AQA Level 2 Certification) with the opportunity to achieve an additional GCSE.

PROGRESSION

Mathematics offers many progression routes. Studying this subject at A Level is good preparation for several degree courses, including Mathematics or Science.

GCSE Mathematics supports various other further education qualifications and is essential for numerous career choices. The Functional Mathematics element of the course is designed to develop the skills necessary to apply the Mathematics learned to other areas.

Science

EXAMINING BODY AQA - GCSE Sciences

All students will take Science courses equivalent to at least 2 GCSEs

Either:

Combined Trilogy (Double Award)

Or:

Separate Sciences where students will achieve 3 GCSEs - Biology, Chemistry & Physics



Combined Trilogy (Double Award)

COURSE DESCRIPTION

This course covers all three subject areas (Biology, Chemistry and Physics) and can be taken at either Foundation (grades 1-5) or Higher Level (grades 4-9).

In the Key Stage 4 Science courses you will learn about the way science and scientists work within society, with a common theme throughout the course of How Science Works. You will consider the relationships between data, evidence, theories & explanations. Practical, problem solving and enquiry skills will be developed while working individually and in groups. During the course you will evaluate methods of enquiry and conclusions and learn how to communicate your ideas effectively.

In developing your understanding and skills you will relate your scientific understanding to your own and others decisions about lifestyles and scientific and technological developments in society. You will consider social, economic, environmental and ethical issues. Opportunities for ICT are incorporated into the course.

Throughout the course you will study Biology, Chemistry, Physics and their practical skills. There is particular emphasis on the applications of science and the implications of scientific discoveries and the use of maths to analyse evidence collected. You will carry out 21 practical's over the course and these will be written up in full. You will be assessed on your practical skills in your exams with at least 15% of the marks coming from questions relating to these practical's.

Examples of course content include Infection, Bioenergetics, Genetics, Quantitative Chemistry, Bonding and properties of matter, Forces, Energy and Electromagnetism.

EXAMINATION

Assessment for the course is by written exam papers. You may be entered for either Foundation or Higher tier.

Biology 1 (covering topics 1-4)	1 hour 15 minutes	16.7%
Biology 2 (covering Topics 5-7)	1 hour 15 minutes	16.7%
Chemistry 1 (covering Topics 8-12)	1 hour 15 minutes	16.7%
Chemistry 2 (covering Topics 13-17)	1 hour 15 minutes	16.7%
Physics 1 (covering Topics 19, 21, 23, 24)	1 hour 15 minutes	16.7%
Physics 2 (covering Topics 18, 20, 22)	1 hour 15 minutes	16.7%

PROGRESSION

To progress to A Levels in Biology, Chemistry or Physics, Grade 7-6 or higher is required at GCSE. This course can also lead to a wide variety of degree and career choices. Medical Science is also an option at KS5, for which 55 is required in Combined Science or 5s in Triple Science.

Triple Science

EXAMINING BODY: AQA

This course covers **GCSE Biology + GCSE Chemistry + GCSE Physics (3 Science GCSEs)** and it is expected that students will be preparing for the **Higher Tier examinations**.

Students wishing to be considered for the Separate Science GCSEs must be supported by a recommendation from their Science teachers.



COURSE DESCRIPTION

In this Key Stage 4 Science course, you will learn about the way science and scientists work within society, with a common theme throughout the course of How Science Works. You will consider the relationships between data, evidence, theories & explanations. Practical, problem solving and enquiry skills will be developed while completing the core practicals for each of the three sciences. You will be assessed on your practical skills in your exams with at least 15% of the marks coming from questions relating to these practicals.

In developing your understanding and skills, you will relate your scientific understanding to your own and others decisions about lifestyles and scientific and technological developments in society. You will consider social, economic, environmental and ethical issues. Opportunities for ICT are incorporated into the course.

By taking the three Sciences as separate GCSEs, more content will be covered than in the Combined Trilogy course, but the structure of the Separate Science course will be very similar.

EXAMINATIONS

GCSE Biology

Paper 1 (Topics 1-4) 1 hour 45 mins written examination 16.7%

Paper 2 (Topics 5-7) 1 hour 45 mins written examination 16.7%

GCSE Chemistry

Paper 1 (Topics 1-5) 1 hour 45 mins written examination 16.7%

Paper 2 (Topics 6-10) 1 hour 45 mins written examination 16.7%

GCSE Physics

Paper 1 (Topics 2, 4, 6 and 7) 1 hour 45 mins written examination 16.7%

Paper 2 (Topics 1, 3, 5 and 8) 1 hour 45 mins written examination 16.7%

PROGRESSION

To progress to A Levels in Biology, Chemistry or Physics at least two science GCSEs at grade 7 are required, one of which must be in the subject you wish to study. This course can lead to a wide variety of degree and career choices.

Religious Education

EXAMINING BODY: AQA

EXAMINATION REQUIREMENTS

One examination: One hour and forty five minutes duration.

CONTROLLED ASSESSMENT: None



COURSE DESCRIPTION

The units studied for the short course in Religious Studies are **Study of religions** and **Thematic Studies** and are based on a study of Christianity and Islam. We also consider the topics from a non-religious point of view and aim to develop students' understanding and opinions on the issues raised. Each unit is briefly outlined below.

The study of religions: Beliefs and teachings (Christianity and Islam)		Thematic Studies (Christianity and Islam)	
Section	Key topics/issues studied	Section	Key topics/issues studied
Beliefs and Teachings (Christianity)	<ul style="list-style-type: none"> • The nature of God • The Trinity • Christian Beliefs about Creation • Afterlife and Judgement • Sin and Salvation • The incarnation and Jesus 	Relationships and families	<ul style="list-style-type: none"> • Human Sexuality • Contraception and family planning • Divorce and Marriage • Nature of families • Gender equality
Beliefs and Teachings (Islam)	<ul style="list-style-type: none"> • Oneness of God • Sunni and Shi'a Islam • Angels • Predestination • Prophethood • Akirah (Life after death) 	Peace and Conflict	<ul style="list-style-type: none"> • Violence and terrorism • Reasons for war • Nuclear war • Just war • Pacifism • Holy War

PROGRESSION

A GCSE in Religious Education is a stepping stone for a wide range of future opportunities. The knowledge, skills and understanding developed will support you in future studies and employment.

Geography

EXAMINING BODY: OCR Geography B

COURSE DESCRIPTION

Geography is the study of where places are and what they are like. It looks at how people live in different parts of the world and how and why places change.



You will learn about global and local issues that are relevant to your life and the future of this planet. This qualification is important in teaching 'life skills' that everyone will use in the future and can lead to further study of Geography. It is useful in a variety of careers linked with tourism, advertising, agriculture, cartography, nature conservancy, economics, business, and surveying.

The course is enquiry-based, which means you will investigate the answers to questions such as:

- How do rivers and coasts affect the people and industry that live and work by them?
- How do natural hazards affect people in parts of the world?
- Why do some places experience population growth while others decline?
- How and why do cities change and differ?
- How can the use of resources, industry and environments best be developed and managed sustainably for our future?

You will gain the following skills:

- Practical skills, for example using:
 - Different kinds of maps, satellite navigation, graphs and statistical analysis techniques;
 - Computers and Information and Communication Technology (ICT) (including GIS);
- Working with others and on your own:
 - Discussing, explaining and presenting your ideas;
 - Fieldwork, collecting and recording information for an investigation;
 - Problem-solving and decision making.

EXAMINATION REQUIREMENTS

There are three exams in this course, all of which are sat at the end of Year 11. This course has a compulsory fieldwork element, therefore there is a payment required towards the running operation of the fieldwork.

Exam 1: Our Natural World - 35%

This examination covers physical topics such as Global Hazards, Climate Change, Distinctive Landscapes and Sustaining Ecosystems. This exam also includes questions which assess your knowledge and understanding of the physical fieldwork you undertook during the course.

Exam 2: People and Society- -35%

This examination covers human topics such as Urban Futures, Dynamic Development, the UK in the 21st Century and Resource Reliance. This exam also includes questions which assess your knowledge and understanding of the human fieldwork you undertook during the course.

Exam 3: Geographic Exploration - 30%

This examination focuses on synoptic assessment from both Our Natural World and People and Society. This exam requires the use of geographic skills including cartographic, graphical and statistical skills. This exam will also require you to formulate enquiry and arguments based upon your wider knowledge and understanding of geographical issues and a range of provided resources.

PROGRESSION

To progress to A Level Geography, it is recommended at least a grade 5 is achieved at GCSE in Geography. Geography is a diverse subject which has links to a wide variety of degrees and careers, whether these be Geographical in nature, business, economic, or science related (just to name a few), this course opens a wide range of options.

History

EXAMINING BODY: AQA

FINAL EXAMINATION: (100% examination)

Two written papers, each of 2 hours duration.

COURSE DESCRIPTION



The key focus of the first paper is understanding the modern world. As industry and technology rapidly modernised in the 19th Century this paper aims to consider how nations coped with this change and how they were affected by the two world wars which took place in the 20th Century. There are two topics within this paper, firstly we will focus on Germany and how it developed from a newly unified state into a democracy, how it coped after the defeat of WW1 and how it came to be ruled by the Nazi dictator; Adolf Hitler. Secondly, we will focus on international relations in the years 1919-1939; how the world re-built after the First World War, how peace was attempted to be kept and why this was ultimately unsuccessful.

The key focus of the second paper is shaping the British nation. We will carry out a thematic study of 'power and the people' from 1170 up to the present day. This will consider how factors such as war, religion, the economy and technology have shifted power within the nation and will explore the development of Britain as a democratic nation. We will then focus on the Restoration Period (1660-1685) and explore why Britain wanted to restore the monarchy after the execution of Charles I and evaluate the reign of Charles II, considering his economic, religious, social and political standpoints.

We aim to stimulate an interest in, and enthusiasm for, the past, and allow you to understand the past events that have formed the background of the world we live in today. You will learn about the nature of cause and consequence, continuity and change, and how individuals adopt different interpretations on key events. A further aim of the course is to develop essential study skills that will give you the ability to use various sources of information such as books, discussions, documents and films.

The best historians, though, will immerse themselves in the periods studied, having sympathy for the historical background but also recognising that history itself is made by humans who were no different from us. They were biased, vulnerable and they exaggerated. The study of history seeks to sift through their opinions to find the facts. As such, skills in reading, writing, speaking and research are essential to the academic historian.

Paper One : Understanding the modern world (50% of GCSE)

Consists of 10 questions totalling 84 marks.

Topics: Germany 1890-1945 Democracy and Dictatorship
International Relations 1919-1939: Peace and conflict

Paper Two : Shaping the nation (50% of GCSE)

Consists of 8 questions totalling 84 marks.

Topics: Britain: Power and the People 1170-Present day
Restoration England 1660-1685

Student Support

- Varied lessons with active learning throughout
- A revision scheme of work from January up to the exam in Year 11
- Online resources for home learning
- Example answers and online tutorials for every exam question

PROGRESSION

To progress to A Level History at least a grade 5 is required at GCSE in History. History provides an excellent basis for those wishing to study Law at university, as well as those considering a career in journalism. Regardless of career choice History is the only GCSE option that teaches you the skills of critical analysis and argument that can help to make sense of the world and give you the tools to spot Fake News.

German

You may only take GCSE German if you have studied German in Year 9

EXAMINING BODY: AQA

FINAL EXAMINATION

Students are entered for a single tier across all papers.



		Foundation	Higher	
Listening	External exam	35 mins ⁺	45 mins ⁺	25%
Reading	External exam	45 mins	1 hour	25%
Speaking	External exam	7-9 mins*	10-12 mins*	25%
Writing	External exam	1 hr 10 mins	1 hr 15 mins	25%

⁺ plus 5 mins reading time and 2 mins at the end of the recording for checking.

* plus 15 mins preparation time.

COURSE DESCRIPTION

The skills already acquired – listening, speaking, reading and writing – are consolidated and used as a basis for further development of the language.

The emphasis throughout is on training you to communicate in German. Foreign languages are a vital asset for modern Industry and Commerce. According to leading representatives in British Industry, foreign language skills are required to meet the demands imposed by commercial ties between the United Kingdom and the rest of Europe.

In the GCSE course you will develop vocabulary, grammar and phonics around which the following subject content is built:

Theme 1: People and lifestyle

- Topic 1: Identity and relationships with others
- Topic 2: Healthy living and lifestyle
- Topic 3: Education and work

Theme 2: Popular culture

- Topic 1: Free-time activities
- Topic 2: Customs, festivals and celebrations
- Topic 3: Celebrity culture

Theme 3: Communication and the world around us

- Topic 1: Travel and tourism, including places of interest
- Topic 2: Media and technology
- Topic 3: The environment and where people live

Many different types of listening and reading material are used to enable you to understand the language you might encounter abroad. You will have the opportunity to work with the German assistant, individually and within a group.

You will also learn to write and give your opinions on different topics.

Key aims:

1. transferable language learning skills
2. the ability to communicate in German (spoken and written)
3. knowledge of grammar and structure in language learning (translation)
4. cultural awareness and understanding of countries and communities where German is spoken.

PROGRESSION

To progress to A Level German at least a grade 6 is required at GCSE in German.

A qualification in languages leads to careers in a variety of different professions, such as journalism, law, medical research, science related industries, pharmacy, banking, media and communication.

French

You may only take GCSE French if you have studied French in Year 9



EXAMINING BODY: AQA

EXAMINATION: Students are entered for a single tier across all papers.

		Foundation	Higher	
Listening	External exam	35 mins ⁺	45 mins ⁺	25%
Reading	External exam	45 mins	1 hour	25%
Speaking	External exam	7-9 mins*	10-12 mins*	25%
Writing	External exam	1 hr 10 mins	1 hr 15 mins	25%

⁺ plus 5 mins reading time and 2 mins at the end of the recording for checking.

* plus 15 mins preparation time.

COURSE DESCRIPTION

The skills already acquired – listening, speaking, reading and writing – are consolidated and used as a basis for further development of the language.

The emphasis throughout is on training you to communicate in French. Foreign languages are a vital asset for modern Industry and Commerce. According to leading representatives in British Industry, foreign language skills are required to meet the demands imposed by commercial ties between the United Kingdom and the rest of Europe.

In the GCSE course you will develop vocabulary, grammar and phonics around which the following subject content is built:

Theme 1: People and lifestyle

- Topic 1: Identity and relationships with others
- Topic 2: Healthy living and lifestyle
- Topic 3: Education and work

Theme 2: Popular culture

- Topic 1: Free-time activities
- Topic 2: Customs, festivals and celebrations
-
- Topic 3: Celebrity culture

Theme 3: Communication and the world around us

- Topic 1: Travel and tourism, including places of interest
- Topic 2: Media and technology
- Topic 3: The environment and where people live

Many different types of listening and reading material are used to enable you to understand the language you might encounter abroad. You will have the opportunity to work with the German assistant, individually and within a group.

You will also learn to write and give your opinions on different topics.

Key aims:

1. transferable language skills
2. the ability to communicate in French (spoken and written)
3. a knowledge of grammar and structures in language learning (translation)
4. cultural awareness and understanding of communities where French is spoken.

PROGRESSION

To progress to A Level French at least a grade 6 is required at GCSE in French.

A qualification in languages leads to careers in a variety of different professions, such as journalism, law, medical research, science related industries, pharmacy, banking, media and communication.

Spanish

You may only take GCSE Spanish if you have studied Spanish in Year 9

EXAMINING BODY: AQA

EXAMINATION



Students are entered for a single tier across all papers.

		Foundation	Higher	
Listening	External exam	35 mins ⁺	45 mins ⁺	25%
Reading	External exam	45 mins	1 hour	25%
Speaking	External exam	7-9 mins*	10-12 mins*	25%
Writing	External exam	1 hr 10 mins	1 hr 15 mins	25%

⁺ plus 5 mins reading time and 2 mins at the end of the recording for checking.

* plus 15 mins preparation time.

COURSE DESCRIPTION

The skills already acquired – listening, speaking, reading and writing – are consolidated and used as a basis for further development of the language.

The emphasis throughout the GCSE course is on training you to communicate in Spanish. Foreign languages are a vital asset for modern Industry and Commerce. According to leading representatives in British Industry, foreign language skills are required to meet the demands imposed by Commercial ties between the United Kingdom and the rest of Europe.

In the GCSE course you will develop vocabulary, grammar and phonics around which the following subject content is built:

Theme 1: People and lifestyle

- Topic 1: Identity and relationships with others
- Topic 2: Healthy living and lifestyle
- Topic 3: Education and work

Theme 2: Popular culture

- Topic 1: Free-time activities
- Topic 2: Customs, festivals and celebrations
- Topic 3: Celebrity culture

Theme 3: Communication and the world around us

- Topic 1: Travel and tourism, including places of interest
- Topic 2: Media and technology
- Topic 3: The environment and where people live

Many different types of listening and reading material are used to enable you to understand the language you might encounter abroad. You will have the opportunity to work with the Spanish assistant, individually and within a group.

You will also learn to write and give your opinions on different topics.

Key Aims:

1. transferable language skills
2. the ability to communicate in Spanish (spoken and written)
3. a knowledge of grammar and structures in language learning (translation)
4. cultural awareness and understanding of communities where Spanish is spoken.

PROGRESSION

To progress to A Level Spanish at least a grade 6 is required at GCSE in Spanish.

A qualification in languages leads to careers in a variety of different professions, such as journalism, law, medical research, science related industries, pharmacy, banking, media and communication.

Art & Design

EXAMINING BODY EDEXCEL: (Fine Art)

COURSEWORK: (60%)

In Year 10 you will develop your art skills and ideas in preparation for producing a body of work for the end of year assessment. This will comprise of 45 hours of work to be conducted after May half term in Year 10, lasting through to the end of the Autumn term in Year 11.



You will be required to submit one unit of coursework which will comprise a number of pieces of work based around one theme. This will give you the opportunity to show examiners the full range of your work and abilities. You will be assessed on your coursework, the timed test and, importantly, preparation work for the timed test. Coursework is worth 60% of your final grade and the Exam is 40%.

FINAL EXAMINATION: (40%)

A 10-hour timed test. For this timed test you are given a theme (8 school weeks in advance) which is set by the exam board in January of Year 11. You are expected to develop a body of work exploring different media and techniques in consultation with the teacher. The preparation work which you use to produce the final outcome will count for the majority of your total marks.

COURSE DESCRIPTION

The aims of the Art Department courses are to increase visual awareness, to develop technical ability in a variety of media and to encourage creative and imaginative responses to the environment.

There are four basic areas to the course:

- **Painting**
The course involves painting and drawing in a variety of media and encourages investigation and experimentation of work both from observation and imagination.
- **Drawing**
Drawing from both primary and second hand sources, which involves a variety of different media and materials to be explored.
- **Print**
Methods such as mono-printing, lino-printing, batik and collage will be investigated.
- **Digital Media**
The use of photography and software such as Photoshop will be used to develop and explore ideas and source material.

You will be assessed on your ability to:

- Generate and develop ideas
- Refine ideas through experimentation
- Research and record
- Produce and present work

Visits to galleries form an important part of the course and you will also get the opportunity to attend trips.

PROGRESSION

To progress to A Level Art and Design at least a grade 5 is required at GCSE in Art and Design.

There has been massive growth in the arts sector and GCSE in Art could prepare you for many creative roles and give you key skills that many employers are looking for.

Photography

EXAMINING BODY: AQA (Photography)

COURSEWORK: (60%)

In Year 10 you will develop basic and fundamental photographic skills, developing a body of work for the end of year assessment. You will explore Portraiture in the first project which runs into a second project about "Identity". Your final project which is the largest is chosen and proposed by yourself and lasts through to the end of the Autumn term in Year 11. You will be trained on Photoshop, Lightroom, Premiere pro, Photopea, Photography studio lighting, DSLR cameras and 35mm film darkroom. This will give you the opportunity to show examiners the full range of your work and abilities. You will be assessed on your coursework, the timed test and, importantly, preparation work for the timed test. Coursework is worth 60% of your final grade and the Exam is 40%.



FINAL EXAMINATION: (40%)

A 10-hour timed test. For this timed test you are given 7 themes set by the exam board in January of Year 11, of which you will select one (8 school weeks in advance). You are expected to develop a body of work exploring different techniques and ideas in consultation with the teacher. The preparation work which you use to produce the final outcome will count for the majority of your total marks.

COURSE DESCRIPTION

The aims of the Photography course are to increase visual literacy, to develop technical ability and skillsets and to encourage creative and imaginative responses to a stimulus. The course is heavily coursework based and works on a cyclical experiential cycle of planning, doing, reflecting, changing.

There are two basic areas to the course:

- **Digital Photography**

You will have the opportunity to learn about:

- The use of light as the most important element in photography.
- The basis of digital photography, including the use of a DSLR camera.
- Viewpoint, composition, focus, shutter speed and exposure.
- The use of editing software such as Adobe, Photoshop and Lightroom.

- **Photography Genres**

You will be expected to develop knowledge of:

- A range of photographic genres such as documentary, street, fashion and portrait.
- Qualities of lighting in both studio and location based work.
- Contextual connections (Historical and Societal) between your own photography and the work of other photographers.
- How to analyse and deconstruct photographic images from a range of genres.

You will be assessed on your ability to:

- Generate and develop ideas
- Refine ideas through experimentation
- Research and record
- Produce and present work

Visits to exhibitions and participation in practical workshops form an important part of the course. You will also get the opportunity to attend residential and cultural visits organised by the Art Department.

PROGRESSION

To progress to A Level Photography at least a grade 5 is preferable at GCSE in Photography, Art & Design, or Design & Technology.

There are many jobs roles that include photographic skills and this would enable you to apply for them.

Drama

EXAMINING BODY: AQA

COURSE DESCRIPTION & EXAMINATION REQUIREMENTS

The subject content for GCSE Drama is divided into three components outlined below:

N.B. In the practical components you may specialise in performing, lighting, sound, set or costume.



Component 1: Understanding drama (40%) marked by external examiners

- **What is assessed?**
 - Your knowledge and understanding of drama and theatre
 - You will study one set play *Blood Brothers* practically in class and write about that in the exam
 - You will analyse and evaluate a live theatre performance.
- **How it is assessed**
 - Written exam: 1 hour 45 minutes

Component 2: Devising drama (40%) marked by teachers, moderated by AQA

- **What is assessed?**
 - The drama performance you create and your input of characters and ideas
 - Your performance of devised drama piece (as a performer or designer)
You will write a report of the process, analysing and evaluating your work.
- **How it is assessed**
 - Devising log/report (60 marks)
 - Devised performance (20 marks)

Component 3: Texts in practice (practical) (20%) marked by AQA

- **What is assessed?**
 - You will perform two extracts from one play (as a performer or designer)
 - You have a free choice of play (it must contrast with *Blood Brothers*)
- **How it is assessed**
 - A performance of the pieces: Extract 1 (25 marks) and Extract 2 (25 marks)

Will I enjoy the course?

- You will enjoy this course if you want to study a subject that is both **practical** and **creative**.
- GCSE Drama follows on from drama work that you will have covered already in Drama in Years 7-8. You will develop your **improvisation** and **acting skills** to a higher level.
- You will look at plays in more detail and look at different ways of bringing a **script** alive on stage.
- You get to explore different **themes and issues** through empathising with different opinions and viewpoints.
- You may have always wanted to have a go at making a play and performing, making **costumes**, creating a **set** or using the **lights** but never had the chance. You can with GCSE Drama.

- You will get the opportunity to go on some **theatre trips** to extend your learning.

PROGRESSION

You may wish to study Drama and Theatre Arts in more depth at A Level. The skills you learn through GCSE Drama are transferable to **any** industry as communication is a vital skill to develop for success in life.

To progress to A Level Drama & Theatre Studies at least a grade 5 is required at GCSE in Drama.

CAREERS

The UK is a global leader in creative industries. The creative industries sector contributed £109bn to the UK economy in 2021. This is equivalent to 5.6% of the UK economy. Drama could aspire you to a vast range of job opportunities including: Stage Crew, Playwright, Set Designer, Screenwriter, Comedian, Broadcaster, Producer, Advertising, Marketing, Lighting Designer, Stage Manager, Arts Administrator, Film Director, Drama Therapist, Actor, Drama Teacher, Artistic Director, Usher, Publicist, Audio Engineer, Sound Designer, Costume Designer, Makeup Artist, Scenic Artist, Camera Operator, Blogger/Vlogger, Casting, Agent, Performer, Game Designer and many more...

Performing Arts

BTEC Level 2 Technical Award in Performing Arts (Musical Theatre)

EXAMINING BODY: EDEXCEL
(equivalent to 1 GCSE Level 2)

COURSE DESCRIPTION



Performing Arts is a practical course which enables you to gain a widely acceptable qualification in Performing Arts. It is a two year course where successful students will gain the equivalent of either 1/2 GCSE pass (level 1) or one GCSE pass (Level 2). You will complete 3 units covering all aspects of Performing Arts. These include:

Core Units

- **Component 1 : Explore the sector by** examining professional practitioners' work, then by exploring the relationships between features of existing performance material
- **Component 2: Develop knowledge, skills and best practice by** developing your physical, vocal and interpretative skills in workshop, rehearsal and applying them in performance. You will review your own development and performance.
- **Component 3: Apply knowledge, skills and best practice by** developing ideas in response to a brief, through discussion and practical exploration activities. You will demonstrate how to select and develop performance skills and techniques that are needed to fulfil the brief, taking part in a workshop performance and evaluate the development process and performance outcome.

Will I enjoy the course?

- If you regularly perform outside of school.
- You will enjoy this course if you want to study a subject that is both practical and creative.
- The BTEC requires you to perform in acting, singing and dancing.
- You will get the opportunity to attend theatre trips to extend your learning.

ASSESSMENT

Assessment takes place through internally marked assignment briefs which will require you to generate various forms of evidence.

These forms of evidence include:

- Rehearsal/production notes
- Video or audio recordings
- Research projects
- Presentations
- Photographs
- Performances - marked on skills, team work and communication of ideas
- Complete a written exam - externally assessed

Your final BTEC qualification will be awarded as either:

- Level 1 – Pass, Merit, Distinction
- Level 2 – Pass, Merit, Distinction, Distinction*.

PROGRESSION

To progress to A Level Drama and Theatre Studies at least a Merit is required at BTEC in Performing Arts.

The skills you learn on this course are transferable to any industry. These might include careers in such fields as theatre management, event organisation, sales and marketing or any career that involves meeting people face to face.

Information Technology

Level 1 / Level 2
Technical Award in Digital Information Technology

EXAMINING BODY: Pearson



COURSE DESCRIPTION AND AIMS

The BTEC is a vocational qualification that takes an engaging, practical and inspiring approach to learning and assessment. The everyday use of IT, from PCs to smartphones, now impacts all our lives. This new qualification in digital IT reflects this and provides students with a solid understanding of the subject which they can use in their working lives. Computer technology continues to advance rapidly and the way that technology is consumed has also been changing at a fast pace over recent years. The growth in the use of mobile devices and web-related technologies has exploded, resulting in new challenges for employers and employees. Businesses today require an ever-increasing number of technologically-aware individuals and this qualification is intended to help students develop the skills they will need in the future across a wide range of job roles.

What will I be studying?

This award allows students to develop useful key-skills for working in the information technology sector, through a mixture of investigation and project-work. These include project planning, designing and creating user-interfaces, and creating dashboards to present and interpret data. Students learn about the processes that underpin effective ways of working, including common planning techniques, iterative design processes, team-work and cyber-security, as well as legal and ethical codes of conduct. Students will also consider how user-interfaces meet user needs, how organisations collect and use data to make decisions, and virtual ways of working.

Component number	Component title	GLH	Assessment
1	Exploring User Interface Design Principles and Project Planning Technique	36	Internally assessed coursework (30% of the course)
2	Collecting, Presenting and Interpreting Data	36	Internally assessed coursework (30% of the course)
3	Effective Digital Working Practices	48	Externally assessed exam (40% of the course)

PROGRESSION

This qualification supports progression to further study, including BTECs in Computing, IT and related subjects. The course will develop students' skills and knowledge to enable progression to further IT qualifications. It provides a firm base for many careers or general further study and is a worthwhile course for students who are thinking about a career in the IT industry or in careers which involve use of IT, an area currently experiencing a major skills shortage. To progress to BTEC IT at A level, you will be required to obtain a Merit in BTEC IT if taken.

Computer Science

EXAMINING BODY: OCR

EXAMINATION REQUIREMENTS

Examination 100% of total qualification

Paper 1: Computer systems **50%**

Paper 2: Computational thinking, algorithms and programming **50%**



COURSE DESCRIPTION AND AIMS

Content of Computer systems (J277/01)

This component will introduce you to the fundamental aspects of Computer Science - how the central processing unit (CPU), memory and storage work together to form a functioning computer. The internet and how it works through wired and wireless networks and the protocols associated with it. The unit also covers system security and system software along with the ethical, legal, cultural and environmental concerns associated with digital devices.

Content of Computational thinking, algorithms and programming (J277/02)

In this component you will be introduced to *computational thinking* - a form of logical problem approach and problem solving which is key to solving problems through programming.

In algorithms you will learn some of the standard sorting and searching algorithms (such as bubble sort and binary search) at a conceptual level and be taught how to create flow-charts and pseudocode in order to create your own algorithms.

You will also be introduced to the fundamental programming techniques (sequence, selection, iteration) and procedural programming and be given programming tasks to complete throughout the course.

PROGRESSION

This qualification supports progress to further study, including A Levels, BTECs and Diplomas in Computing, Computer Science, IT and related subjects, and on to degree level in the areas of computing, engineering and science.

To progress to A Level Computer Science, you will be required to obtain at least a grade 6 at GCSE in Computer Science, (with evidence of confident programming in Python) and a grade 6 in Maths. It's compulsory to have GCSE Computer Science to progress onto A level Computer Science.

Food Preparation & Nutrition (Design & Technology)

EXAMINING BODY: AQA

EXAMINATION REQUIREMENTS

Written Exam

50% (1 hour 45 minutes, 100 marks available)

Controlled Assessment

50% (Consisting of two separate tasks)



CONTROLLED ASSESSMENT

The controlled assessment consists of TWO tasks:

Task 1: Practical investigations accompanying a written or electronic report (1,500–2,000 words) including photographic evidence of the practical work.

Task 2: Students will prepare, cook and present a final menu of three dishes within a single period of no more than three hours, planning in advance how this will be achieved. Written or electronic portfolio including photographic evidence.

COURSE DESCRIPTION

As part of the course you will perform practical work approximately once every three lessons which will cover a range of demanding food preparation, cooking and finishing techniques. The theoretical elements of the course will include the study of food science, food choice, food provenance, food safety, nutrition and health.

In Year 9 you start to develop your practical skills. Year 10 builds on those skills which will be further developed throughout the GCSE course. As well as completing controlled assessment tasks in Years 10 and 11, you will study the theoretical elements of the course in preparation for the exam.

PROGRESSION

This course will enable students to progress into a career in all aspects of catering, whether a specialist area or a general chef in a restaurant. It will also provide a good stepping stone for students who are interested in a career with a nutrition background, e.g. dietician. The course will also endow students with valuable life skills and enable them to make healthy life choices long into the future.

Design & Technology

EXAMINING BODY: AQA

EXAMINATION REQUIREMENTS

Written Examination	50%
Controlled Assessment	50%

The written examination is not tiered and will test students on their subject knowledge as well as design skills.



NEA - CONTROLLED ASSESSMENT

The controlled assessment consists of one project selected from a range of set tasks. The coursework takes approximately 30-35 hours to complete and consists of a working prototype and a concise e-portfolio of approximately 20 pages of A3 paper, equivalent A4 paper or the digital equivalent. This will be completed during lessons and will consist of a **design portfolio** and a **made 3D product**.

COURSE DESCRIPTION

This is a design and make course that focuses on the ability to problem solve, develop and communicate with creativity, feasible ideas into 3D products. The knowledge, understanding and skills that all students must develop have been separated into technical principles and designing and making principles.

The short projects in Year 9 built on the skills developed at KS3, developing your knowledge and understanding of the use of Computer Aided Design (CAD); of communicating by sketching in both 2D and 3D and designing and making in a range of materials including paper and board, woods, metals and plastics. In Year 10, longer projects will build on the work done in Year 9 and will enable you to extend your knowledge and skills to meet the requirements of the GCSE coursework.

In addition to designing and making projects, the theoretical content will be taught in units or alongside the practical elements.

PROGRESSION

Design & Technology develops and strengthens a variety of skills needed to support any practical applications related to everyday life and is a stepping stone to a variety of creative careers and courses from A Level through to university. These may include **apprenticeships**, courses in **Product Design, Architecture, Engineering** and other **vocational qualifications** and **design jobs**.

To progress to A Level Product Design at least a grade 5 will be required in Design and Technology.

Business Studies

EXAMINING BODY: EDEXCEL

EXAMINATION REQUIREMENTS

Theme 1: Investigating small business - Exam paper 90 marks /105 minutes - worth **50% of final grade**

Theme 2: Building a business - Exam paper 90 marks / 105 minutes - worth **50% of final grade**



Examinations will take place at the end of Year 11. No coursework

COURSE OVERVIEW

Studying Business at GCSE will provide you with the essential skills and understanding required to navigate the fast-paced and challenging world in which we live. This course allows you to become a better-informed consumer and empowers you to make educated financial decisions. You will explore how entrepreneurs identify unique opportunities and transform simple ideas into successful, profitable enterprises. It is worth remembering that global giants such as Apple, Google, and Microsoft all began with a single creative spark!

What Will You Study?

The course is divided into two comprehensive units:

- **Unit 1: Investigating Small Business** – You will learn how entrepreneurs start a business, spot an opportunity, and manage the initial challenges of a new enterprise.
- **Unit 2: Building a Business** – You will research how small businesses transition into large corporations. This includes exploring key departments such as **Marketing, Operations, Finance, and Human Resources**.

If you enjoy programs such as *Dragons' Den*, or if you are curious about the mechanics of corporate success, then GCSE Business is an ideal choice for you.

Key Skills for Success

It is important to recognise that GCSE Business involves a variety of practical and academic skills:

- **Quantitative Skills:** A significant portion of the course focuses on business finance. You will learn to work with income statements, cash-flow forecasting, and break-even analysis. You will also perform calculations within marketing and production modules and learn to interpret complex charts and graphs.
- **Quality of Written Communication:** You will be required to produce extended pieces of writing. Developing well-structured arguments and providing detailed analysis is vital for achieving high marks in the longer-form exam questions.

Progression and Future Careers

Business remains one of the most popular subjects at university level worldwide. Choosing this GCSE is an excellent way to discover if you would like to pursue the subject in higher education.

Beyond the classroom, this qualification provides a fantastic foundation for a wide range of careers, including:

- Marketing and Advertising
- Retail and Logistics
- General Management
- Banking and Finance

Entry Requirements

You will be able to continue your journey by studying Business at A-Level and beyond. To progress to A-Level Business Studies at this school, we require at least a **Grade 5** in GCSE Business. If you have not taken the subject at GCSE, you will require at least a **Grade 5** in both English and Mathematics.

Economics

EXAMINING BODY: OCR

EXAMINATION REQUIREMENTS

Component 1: Introduction to Economics.

Exam paper 80 marks / 90 minutes **50% of final grade**

Component 2: National and International Economics.

Exam paper 80 marks / 90 minutes **50% of final grade**



Examinations will take place at the end of Year 11. No coursework!

COURSE OVERVIEW

Economics is a truly fascinating subject that explores the fundamental mechanics of our world. If you find yourself curious about how society functions, Economics provides the tools to answer some of the most significant questions of our time.

At its heart, Economics investigates the "basic economic problem": we live in a world of limited resources—such as copper, oil, and land—yet we possess unlimited wants for goods like smartphones, fashion, and travel. Economics seeks to understand how we can best provide for our essential needs, such as healthcare and shelter, while also satisfying our desires for luxury items. A successful economy aims to achieve this efficiently, minimising waste while ensuring that the needs of all people are met in a fair and sustainable manner.

Developing Your Perspective

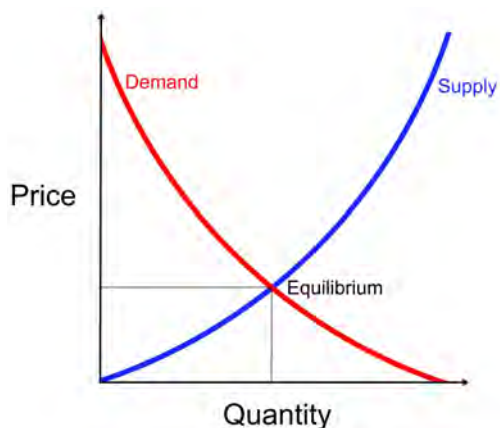
Throughout this course, you will engage with challenging ethical and social dilemmas that require you to make informed choices:

- Should a government prioritise building more schools or investing in national defence?
- Should healthcare be provided free at the point of use, or should individuals contribute to their own treatment?
- Is it right to increase taxes to fund better infrastructure, such as new roads and railways?
- As robots and artificial intelligence become more capable, should we tax companies that replace human workers with machines to fund a basic income for everyone?
- Should rich pensioners be given a freedom bus pass?

The answers to these questions often depend on your personal values. This course will empower you to develop your own informed views and a sophisticated understanding of the global economy.

What Skills Will You Gain?

By learning to explain and evaluate economic problems, you will acquire the "economist's mindset"—a highly valued, logical approach to thinking and reasoning.



It is important to note the following academic requirements:

- **Quantitative Skills:** At least **10%** of the overall marks are dedicated to numerical application. You will learn to construct and interpret complex tables, charts, and graphs, and perform essential calculations such as percentage changes.
- **Analytical Writing:** The quality of your written communication is vital. You will be required to produce extended pieces of writing, where you must develop clear, logical arguments to evaluate economic theories.

Progression and Future Careers

Economics is a prestigious subject that provides an excellent foundation for further study in the Sixth Form and at university. It is highly regarded by employers and opens doors to a wide range of rewarding careers, including:

- Banking and Global Finance
- Accountancy and Actuarial Science
- Politics and Public Policy
- Data Analysis and Management Consultancy

Entry Requirements

To continue your journey to A-Level Economics at this school, we require at least a **Grade 6** in GCSE Economics. If you have not previously studied the subject, you will need to achieve at least a **Grade 6** in both English and Mathematics.

Media Studies

EXAMINING BODY: EDUQAS EXAMINATION REQUIREMENTS

Examination: **70%**

Controlled Assessment: **30%**



COURSE DESCRIPTION

GCSE Media Studies gives you the chance to develop a critical understanding of the role of the media in daily life. It encourages an understanding of how to use key media concepts to analyse media products and the opportunity for hands-on practical work. This subject is assessed in three ways:

Component 1: Exploring the Media

- Section A: Exploring Media Language and Representation
This section assesses media language and representation in relation to two of the following print media forms: magazines, marketing (film posters), newspapers, or print advertisements.
- Section B: Exploring Media Industries and Audiences
This section assesses two of the following media forms: film, newspapers, radio, video games.

Component 2: Understanding Media Forms and Products

This component assesses all areas of the theoretical framework and contexts of the media in relation to television and music.

- Section A: Television
- Section B: Music (music videos and online media)

Component 3: Creating Media Products

Non-exam assessment: 30% of qualification

- An individual media production for an intended audience in response to a choice of briefs set by EDUQAS, applying knowledge and understanding of media language and representation.

PROGRESSION

Media Studies GCSE promotes critical enquiry, knowledge of the key topical issues concerning the role of the media and how it works. This GCSE can lead to further study in an advanced course or to further studies in journalism, marketing and commerce. To progress to A Level Media Studies at least a grade 6 is required at GCSE in Media Studies.

Physical Education

EXAMINING BODY: EDEXCEL

COURSE DESCRIPTION

This GCSE in Physical Education will equip you with the knowledge, understanding, skills and values you need to be able to develop and maintain your performance in physical activities. You will also gain an understanding of how physical activities benefit health, fitness and well-being.

CONTENT AND ASSESSMENT OVERVIEW

This qualification consists of four components:

Component 1: Fitness and Body Systems - a written exam of 1 hour 45 minutes (36%)

- Topic 1: Applied anatomy and physiology
- Topic 2: Movement analysis
- Topic 3: Physical training
- Topic 4: Use of data

Component 2: Health and Performance - a written exam of 1 hour 15 minutes (24%)

- Topic 1: Health, fitness and well-being
- Topic 2: Sport psychology
- Topic 3: Socio-cultural influences
- Topic 4: Use of data

Component 3: Practical Performance - a practical external moderation (30%)

- The assessment consists of you completing three physical activities from a set list
- One must be a team activity
- One must be an individual activity
- The final activity can be a free choice

Component 4 – Personal Exercise Programme - marked in school, externally moderated (10%)

- The assessment consists of you producing a Personal Exercise Programme and requires you to analyse and evaluate your performance.

PROGRESSION

Students can progress from this qualification to:

- further study of Physical Education at A Level
- vocational courses such as the OCR Technical in Sport
- apprenticeships and other training
- employment in a related sector.

Psychology

New loom - [GCSE Psych loom](#)

EXAMINING BODY: AQA

EXAMINATION: Linear: two exams at the end of year 11

COURSE DESCRIPTION

Psychologists study everything about people - what could be more interesting than people? During the course students will be introduced to the fundamentals of psychology. They will develop critical analysis, independent thinking and research skills.

Psychologists have researched the following questions about human behaviour:

- Why do you think you remember some things and not others?
- How did you learn what you know?
- Why do we conform to peer pressure?
- Why do we follow orders from 'authority'?
- How do visual illusions trick our brains?

Students are expected to show:

- Analytical and Evaluation skills
- Mathematical skills
- Scientific skills
- Application
- Design, conduct research and analyse and interpret data.

EXAM CONTENT

Paper 1: Cognition and Behaviour. 1hr45, 100 Marks (50% of GCSE)

- Memory - multiple choice, short answer and extended writing (25 marks)
- Perception - multiple choice, short answer and extended writing (25 marks)
- Development - multiple choice, short answer and extended writing (25 marks)
- Research Methods - multiple choice, short answer and extended writing (25 marks)

Paper 2: Social Context and Behaviour. 1hr45, 100 Marks (50% of GCSE)

- Social Influence - multiple choice, short answer and extended writing (25 marks)
- Language, Thought and Communication - multiple choice, short answer and extended writing (25 marks)
- Brain and Neuropsychology - multiple choice, short answer and extended writing (25 marks)
- Psychological Problems - multiple choice, short answer and extended writing (25 marks)

PROGRESSION

To do well in Psychology you need a good level of understanding in Maths, Science and English, you also need to be able to write essays and debate ideas and concepts. Psychology can be studied at A Level. You do not need GCSE Psychology to study it at A Level, however it is advisable to have good GCSE grades in English, Maths and Science.

Studying Psychology opens up multiple opportunities for further study at University. Many go on to study degrees such as but not limited to; Developmental Psychology, Sport Psychology, Psychology and Criminology or straight Psychology. This can open up many career options and pathways that involve Psychology, such as; educational, forensic or clinical Psychologists.

Sports Studies (OCR Cambridge Nationals)

EXAMINING BODY: OCR (equivalent to 1 GCSE)

This course has been designed primarily for young people who may wish to explore a vocational sports route throughout Key Stage 4; it presents and assesses knowledge in a work-related context. The course is modular and looks to assess students in a variety of ways but is heavily weighted towards coursework based assessment.



It has been developed to:

- encourage personal development through practical participation and performance in a range of sports and exercise activities
- give you a wider understanding and appreciation of health-related fitness, sports and exercise
- encourage you to develop your people, communication, planning and team-working skills, which are essential in working life
- give you the opportunity to progress to other vocational qualifications

Units studied:

- Contemporary issues in Sport (Examined)
- Sports Leadership and Practical sports performance
- Developing skills and knowledge in outdoor activities

ASSESSMENT

One unit is externally assessed through a one-hour exam. The other units are assessed internally in a variety of ways, including:

- Powerpoint presentations
- Posters
- Research projects
- Video making
- Ongoing written logs
- Lesson plans
- Teaching lessons
- Practical Performance
- Examination

You get your final qualification at Pass, Merit, Distinction or Distinction* level.

PROGRESSION

Careers within the leisure industry include employment at all levels from junior trainees to senior management. For those whose interest derives initially from a love of physical activity, there are opportunities in teaching, coaching and administration.

Careers related to education include teaching Physical Education in schools, lecturing in colleges of further education or in higher education. Many local education authorities also employ advisers or inspectors with specialist knowledge, and OFSTED also has specialists in Physical Education and Dance.

Careers in Sports Coaching extend from coaching in sports centres to employment as a National Coach for one of the Governing Bodies of Sport.

Careers in Administration include the management of sports centres, sports clubs, parks, aqua centres and work in Local Authority Recreation and Leisure Departments.

Careers in Health and Fitness include employment in private Health and Fitness Clubs, Rehabilitation Clinics, Fitness Testing Centres and as physiotherapists.

Music

EXAMINING BODY: Eduqas

EXAMINATION REQUIREMENTS

Controlled assessments	60%
Performance	30%
Composition	30%
Listening & Appraising	40%



COURSE DESCRIPTION

- **Unit 1 Performing Music**

You will need to play or sing one solo and one ensemble piece. Both pieces must add up to 4 minutes and standard marks will be awarded to Grade 3 pieces, higher marks will be awarded for Grade 4+.

- **Unit 2 Composing**

You will need to create two compositions. One composition will be completely free choice and the other will be set to a brief given by Eduqas.

- **Unit 3 Listening and Appraising**

You will sit a 75 minute written paper with questions on 2 prescribed set works and 6 unfamiliar pieces of music. Questions such as these are asked:

- 'name the instrument playing the solo'
- 'give two musical reasons why you like or dislike this piece of music'

PROGRESSION

To progress to A Level Music at least a grade 6 is required at GCSE in Music and at least Grade 5 or equivalent will be needed on an instrument/singing.

If you have any questions please see a member of the Music Department and we will be happy to help.